

بِسْمِ اللَّهِ الرَّحْمَنِ الرَّحِيمِ

# TOOLBOX ATTENDANCE FORM

**Title of  
today's session:**

**What questions do  
teachers ask?  
C1.3b**



**Name of Facilitator:**  
Hajah Nor Irniwati  
binti Haji Ismail

# DIALOGIC TEACHING

## What questions do teachers ask?

### C1.3b

Cikgu Hjh Nor Irniwati Hj Ismail  
Lead Trainer

Brunei Darussalam Leadership and Teacher Academy

13<sup>th</sup> February 2025

TODAY →



Bil	Hari & Tarikh	Jam	Tajuk Modul	Tempat
1.	Hari Isnin, 10 Feb 2025	1.45 ptg – <i>Roll Call</i> 2.00 ptg - 3.30 ptg (1½ jam)	Introduction to <b>Teaching for Mastery</b> (TfM)	Secara dalam talian (Online Melalui MS Teams)  *pautan akan dikongsikan dalam laman Live EPS <a href="http://linktr.ee/bdltaeps">linktr.ee/bdltaeps</a>
2.	Hari Rabu, 12 Feb 2025	1.45 ptg – <i>Roll Call</i> 2.00 ptg - 3.30 ptg (1½ jam)	Module C2.2 & 2.3b <b>Lesson Planning and Structuring</b> - How do teachers plan for progress in learning? & How do teachers structure and use time in lessons?	
3.	Hari Khamis, 13 Feb 2025	1.45 ptg – <i>Roll Call</i> 2.00 ptg - 3.30 ptg (1½ jam)	Module C1.3a <b>Teaching content dialogically</b> – How do teachers questions students	
4.	Hari Selasa, 18 Feb 2025	1.45 ptg – <i>Roll Call</i> 2.00 ptg - 3.30 ptg (1½ jam)	Module C1.3b <b>Teaching content dialogically</b> - What questions do teachers ask?	
5.	Hari Khamis, 20 Feb 2025	1.45 ptg – <i>Roll Call</i> 2.00 ptg - 3.30 ptg (1½ jam)	Module C1.3c <b>Teaching content dialogically</b> – How do teachers respond to students' answer?	
6.	Hari Selasa, 25 Feb 2025	1.45 ptg – <i>Roll Call</i> 2.00 ptg - 3.30 ptg (1½ jam)	Module C1.3d <b>Teaching content dialogically</b> – How do teachers engage the whole class?	
7.	Hari Khamis, 27 Feb 2025	1.45 ptg – <i>Roll Call</i> 2.00 ptg - 3.30 ptg (1½ jam)	Module C2.4 – <b>Designing effective learning task:</b> How do teachers use textbooks and other resources?	

## Important Reminders for EPS–binar Participants

### 1. Mute Your Microphone:

- Keep your microphone muted when not speaking to avoid background noise and distractions.

### 2. Use the MTeams Chat Feature:

- Utilise the chat function to ask questions or make comments without interrupting the presenter.

### 3. Be an Active Participant:

- Engage with the content by asking questions, participating in polls and contributing to discussions.

### 4. Take Notes:

- Take some notes to help retain the information, but don't feel pressured to write down everything.

### 5. Stay Until the End:

- Please stay until the end of the session to get the full benefit of the content and discussions.

### 6. Minimize Distractions:

- Find a quiet space and minimize distractions to focus fully on the webinar.

## Important Reminders for EPS-binar Participants

### 7. Enjoy and Engage:

- Make the most tasks and opportunities presented. Your active participation will enrich your learning experience.

### 8. Content Relevance:

- This webinar session is designed to cater to the majority of participants who are Brunei Malay and some who are teaching subjects such as *Bahasa Melayu* (Malay Language), *Sastera* (Malay Literature), *Pengetahuan Ugama Islam* (Islamic Religious Knowledge), and *Melayu Islam Beraja* (MIB - Malay Islamic Monarchy). We aim to provide content and examples that are culturally relevant and beneficial to your teaching practice.

### 9. Specific Focus:

- This webinar is tailored exclusively for participants seeking a comprehensive understanding of the expectations for **Band 5 in rubric C1.3b**.
- The trainer aims to deliver **focused, high-value content without wasting anyone's time.**
- *If you are already familiar with these expectations, your attendance may not be necessary.*

# DIALOGIC TEACHING

C1.3a

how do teachers question students?  
*bagaimana guru menyoal pelajar?*

C1.3b

what questions do teachers ask?  
*apakah jenis soalan yang diajukan oleh guru?*

C1.3c

how do teachers respond to students' answers?  
*bagaimana guru merespons terhadap jawapan pelajar?*

C1.3d

how do teachers engage the whole class?  
*bagaimana guru melibatkan pelajar secara menyeluruh?*



# Today's PD Agenda

**2.10pm** Recital of Surah Al Fatihah

State PD objectives

Starter Activity (10mins)

PD Objective 1 (20mins)

PD Objective 2 (20mins)

PD Objective 3 (20 mins)

**3.10 – 3.20pm** Plenary (10mins)

**3.20 – 3.30pm** QA and Feedback

# EPS ATTENDANCE FORM

**C1.3b**

**Dialogic Teaching:  
What questions  
do teachers ask?**



or simply browse  
[https://bit.ly/EPS\\_Attendance](https://bit.ly/EPS_Attendance)

**Cikgu Hjh Nor Irniwati Hj Ismail**

## C 1.3b



To Train Teachers How to Ask **Open** Questions.



To ask and differentiate Testing, Focusing and Genuine Enquiry Questions



To Train Teachers How to Create Genuine Enquiry Questions that encourage students to **Exemplify, Compare, Conjecture and Generalise.**



# Starter Activity

## WHY do teachers ask questions during lessons?



[https://bit.ly/irni\\_askquestions](https://bit.ly/irni_askquestions)

# WHY do you ask questions during lessons?



# Promote Learning through a Questioning and Reflective Attitude

Please refer to **BTS-TPA 2.0 Part C Focus Area 1.3b**

<b>Guiding Questions</b>	<b>Unsatisfactory 1</b>	<b>Satisfactory 2</b>	<b>Good 3</b>	<b>Very Good 4</b>	<b>Excellent 5</b>
Teaching content dialogically: what questions do teachers ask?	Teachers predominantly ask closed testing questions. They often ask ineffective questions, such as leading, rhetorical or guess-what's-in-my-mind questions. Answers are mostly short utterances.	Teachers ask closed and open testing questions as well as focusing questions. They infrequently ask ineffective questions. Students' answers are sometimes short utterances and sometimes sentences.	Teachers ask a range of questions, including testing, focusing questions and genuine enquiry questions. Their questions encourage students to give answers that are more than short utterances.	Teachers ask testing and focusing questions but predominantly genuine-enquiry questions. Their questions encourage students to discuss their ideas.	Teachers use statements and ask a range of predominantly genuine-enquiry questions that encourage students to exemplify, compare, conjecture and generalise.

# PD Objective 1 – To introduce Dialogic Teaching

Please refer to BTS-TPA 2.0 Part C1.3b

Focus Area	Guiding Questions	Unsatisfactory 1	Satisfactory 2	Good 3	Very Good 4	Excellent 5
<b>C1.3b Promote Learning through a Questioning and Reflective Attitude</b>	Teaching content dialogically: what questions do teachers ask?	Teachers predominantly ask <b>closed testing questions</b> . They often ask ineffective questions, such as <b>leading, rhetorical or guess-what's-in my-mind questions</b> . Answers are mostly short utterances.	Teachers ask <b>closed and open testing questions</b> as well as <b>focusing questions</b> . They infrequently ask ineffective questions. Students' answers are sometimes short utterances and sometimes sentences.	Teachers ask a range of questions, including <b>testing, focusing questions and genuine enquiry questions</b> . Their questions encourage students to give answers that are more than short utterances.	Teachers ask <b>testing and focusing questions</b> but <b>predominantly genuine-enquiry questions</b> . Their questions encourage students to discuss their ideas.	Teachers <b>use statements and ask a range of predominantly genuine-enquiry questions</b> that encourage students to <b>exemplify, compare, conjecture and generalise</b> .

# PD Objective 1

To Train Teachers How  
to Ask Open Questions.



# PD Objective 1

To Train Teachers How  
to Ask Open Questions.

What are open questions?

How is it different from closed  
questions?



# Promote Learning through a Questioning and Reflective Attitude

Please refer to **BTS-TPA 2.0 Part C Focus Area 1.3b**

<b>Guiding Questions</b>	<b>Unsatisfactory 1</b>	<b>Satisfactory 2</b>	<b>Good 3</b>	<b>Very Good 4</b>	<b>Excellent 5</b>
Teaching content dialogically: what questions do teachers ask?	Teachers predominantly ask <b>closed</b> testing questions. They often ask ineffective questions, such as <b>leading, rhetorical or guess-what's-in-my-mind questions.</b> Answers are mostly short utterances.	Teachers ask <b>closed</b> and <b>open</b> testing questions as well as focusing questions. They infrequently ask ineffective questions. Students' answers are sometimes short utterances and sometimes sentences.	Teachers ask a range of questions, including testing, focusing questions and genuine enquiry questions. Their questions encourage students to give answers that are more than short utterances.	Teachers ask testing and focusing questions but predominantly genuine-enquiry questions. Their questions encourage students to discuss their ideas.	Teachers use statements and ask a range of predominantly genuine-enquiry questions that encourage students to exemplify, compare, conjecture and generalise.

# OPEN QUESTIONS VERSUS CLOSED QUESTIONS



### Open vs. Closed Questions

- Open-ended questions begin with:
  - What...?
  - Why...?
  - How...?
- Closed-ended questions begin with:
  - Is /are...?
  - Do / did...?
  - Would / will...?
  - Could / can...?
  - Was / were...?
  - Have / has...?
  - Which...?
  - Who...?
  - When...?
  - Where...?

Questions that should be answered with long responses

---

Answers are often descriptive and explanatory

---

Questions begin with words like how, why, explain, describe, etc.

---

Essay questions

---

Take a long time to answer

Questions that should be answered with short responses

---

Answers are often short and factual

---

Questions begin with words like is, would, do, what, etc.

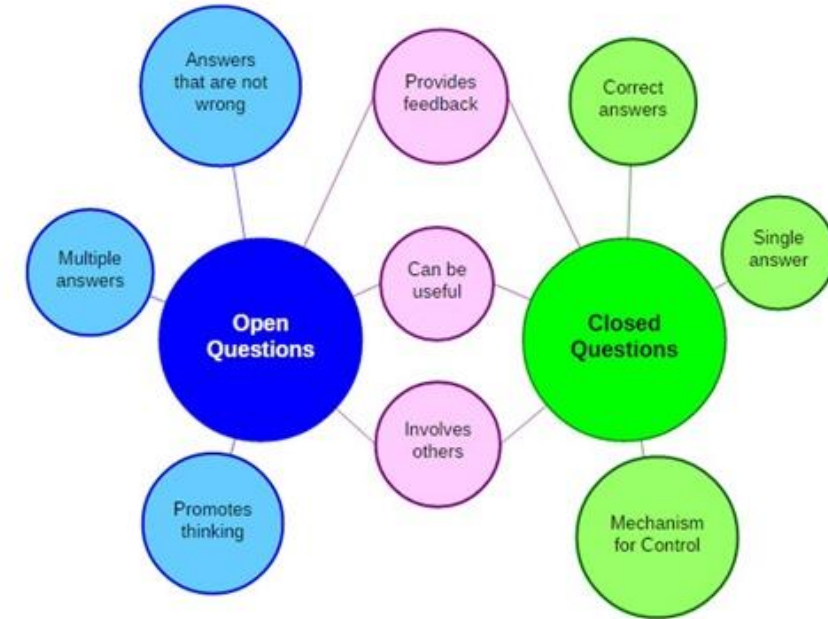
---

Multiple choice questions

---

Can usually be answered quickly

## OPEN ENDED VS. CLOSED ENDED QUESTIONS





## Open questions:

How are you finding the house hunting process?

How do you feel about buying your first home?

Where and how do you find inspiration?

## Closed questions:

Do you find a house buying process challenging?

Do you feel stressed about buying your first home?

Are you inspired by other artists?

Open	Closed
How do you get to work?	Do you get to work by driving, busing, or walking?
Tell me about your relationship with your boss.	Do you get on well with your boss?
What did you manage to accomplish on the trip?	Was your trip successful?
What happened at the meeting?	Did you have a good meeting?

# Activity 1: Rephrasing Closed Questions



## QUESTION 1

Do you like the colour blue?



What do you think will happen if you mix yellow to your favourite colour?

Give some examples of your personal items which are of your favourite colour.

What does your favorite colour say about you?

**Explain how your favourite colour influence your daily life activities.**

What is your favourite colour and why?

## Activity 1: Rephrasing Closed Questions



## QUESTION 2

Is pizza your favourite food?

## Activity 1: Rephrasing Closed Questions



### QUESTION 3

Do you like rock music?

## Activity 1: Rephrasing Closed Questions



### QUESTION 4

Do you love your parents?

# PD Objective 2

To ask and differentiate  
Testing, Focusing and  
Genuine Enquiry Questions



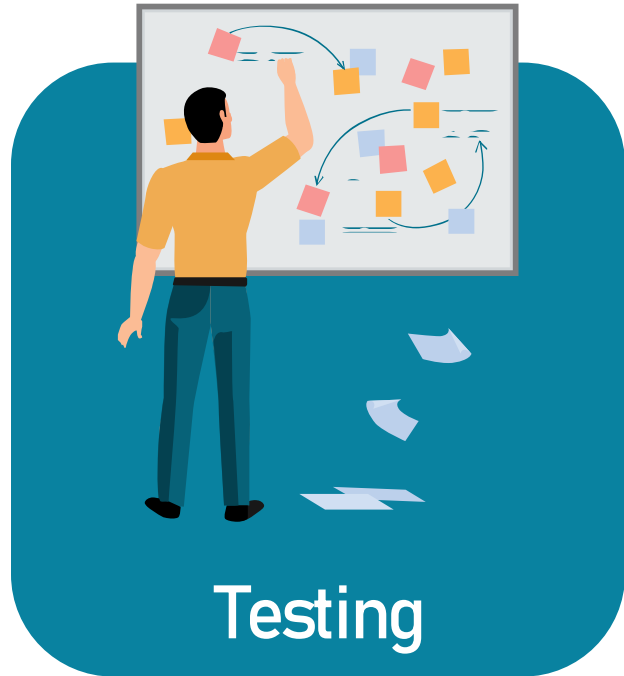
# Promote Learning through a Questioning and Reflective Attitude

Please refer to **BTS-TPA 2.0 Part C Focus Area 1.3b**

Guiding Questions	Unsatisfactory 1	Satisfactory 2	Good 3	Very Good 4	Excellent 5
Teaching content dialogically: what questions do teachers ask?	Teachers predominantly ask closed <b>testing</b> questions. They often ask ineffective questions, such as leading, rhetorical or guess-what's-in-my-mind questions. Answers are mostly short utterances.	Teachers ask closed and open <b>testing</b> questions as well as <b>focusing</b> questions. They infrequently ask ineffective questions. Students' answers are sometimes short utterances and sometimes sentences.	Teachers ask a range of questions, including <b>testing, focusing questions and genuine enquiry</b> questions. Their questions encourage students to give answers that are more than short utterances.	Teachers ask <b>testing and focusing questions but predominantly genuine-enquiry</b> questions. Their questions encourage students to discuss their ideas.	Teachers use statements and ask a range of predominantly <b>genuine-enquiry</b> questions that encourage students to exemplify, compare, conjecture and generalise.

What are the  
functions  
of teacher questions?

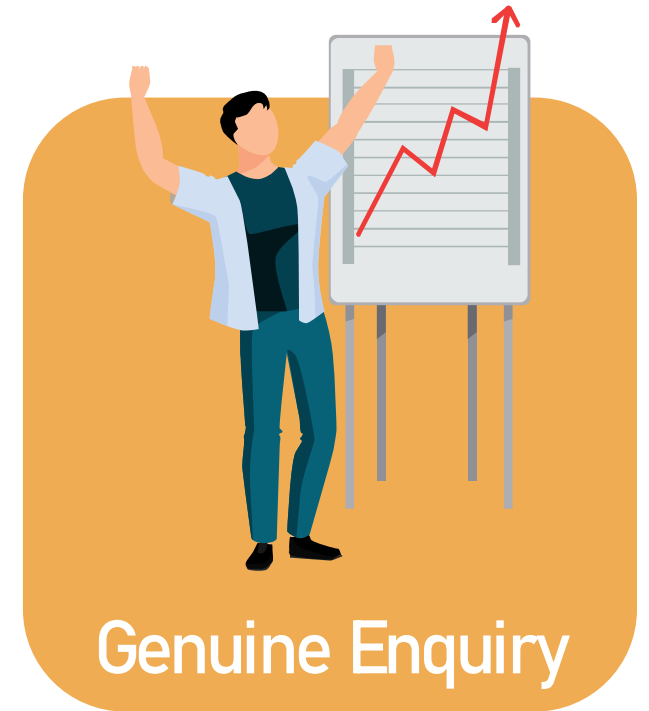
# Main Functions of Teacher Questions



To assess the comprehension or memory of students by asking them to state or rehearse a prior-learned fact or next step in a procedure.



To draw students' attention to something; to support students to arrive at a particular answer.



To glean information from students, encourage them to think and learn what they are thinking.



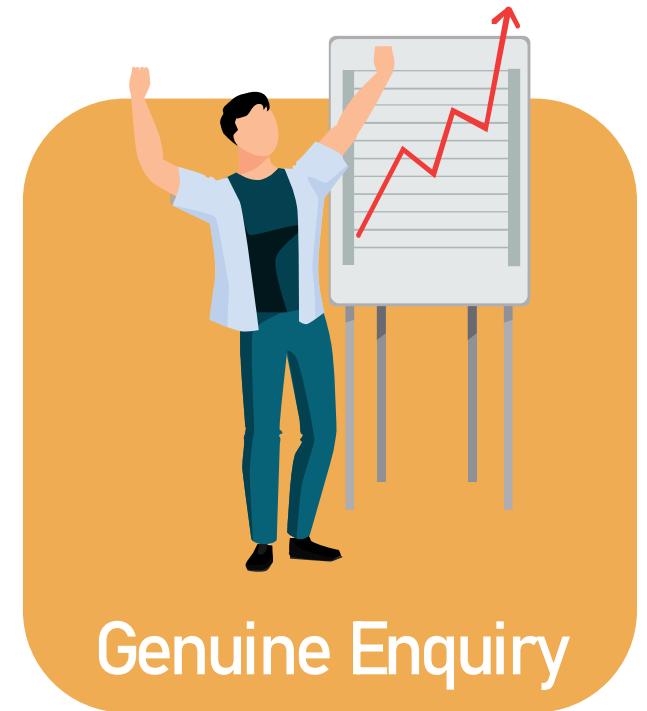
# Differences between these questions: Cikgu Irni's LIVE update!



To assess the comprehension or memory of students by asking them to state or rehearse a prior-learned fact or next step in a procedure.



To draw students' attention to something; to support students to arrive at a particular answer.



To glean information from students, encourage them to think and learn what they are thinking.



# Promote Learning through a Questioning and Reflective Attitude

Please refer to **BTS-TPA 2.0 Part C Focus Area 1.3b**

Guiding Questions	Unsatisfactory 1	Satisfactory 2	Good 3	Very Good 4	Excellent 5
Teaching content dialogically: <b>what questions do teachers ask?</b>	Teachers predominantly ask closed testing questions. They often ask ineffective questions, such as leading, rhetorical or guess-what's-in-my-mind questions. Answers are mostly short utterances.	Teachers ask closed and open testing questions as well as focusing questions. They infrequently ask ineffective questions. Students' answers are sometimes short utterances and sometimes sentences.	Teachers ask a range of questions, including testing, focusing questions and genuine enquiry questions. Their questions encourage students to give answers that are more than short utterances.	Teachers ask testing and focusing questions but predominantly genuine-enquiry questions. Their questions encourage students to discuss their ideas.	Teachers use statements and ask a range of predominantly <b>genuine-enquiry</b> questions that encourage students to <b>exemplify, compare, conjecture and generalise.</b>

# GENUINE ENQUIRY QUESTIONS

Teachers should:

- Ask questions that encourage students to **think** rather than merely remember facts.
- Use questions that stimulate higher-order thinking.

# Genuine enquiry questions ALWAYS CHALLENGE STUDENTS TO THINK...

● *Encourage students to:*

**COMPARE**  
**MEMBANDINGKAN**

● **EXPLAIN**  
**MENERANGKAN**

**CONJECTURE**  
**MERAMAL**

● **EXEMPLIFY**  
**MEMBERI CONTOH**

**GENERALISE**  
**MERUMUS**



# ALWAYS CHALLENGE STUDENTS TO THINK...

Encourage students to:

**COMPARE / MEMBANDINGKAN**

'What is the same about... and...?';

'In what ways are these different?';

'Can you organise or sort these based on...?'

**EXPLAIN / MENERANGKAN**

'Why do you think that...?';

'Can you give me a reason for...?';

'Can you tell me what is wrong with...?'

**CONJECTURE / MERAMAL**

'What do you think will happen next?';

Do you think that this will always happen?';

'What do you infer from this?'

**EXEMPLIFY / MEMBERI CONTOH**

'Can you give me an example of...?';

'Can you give me a counter-example?';

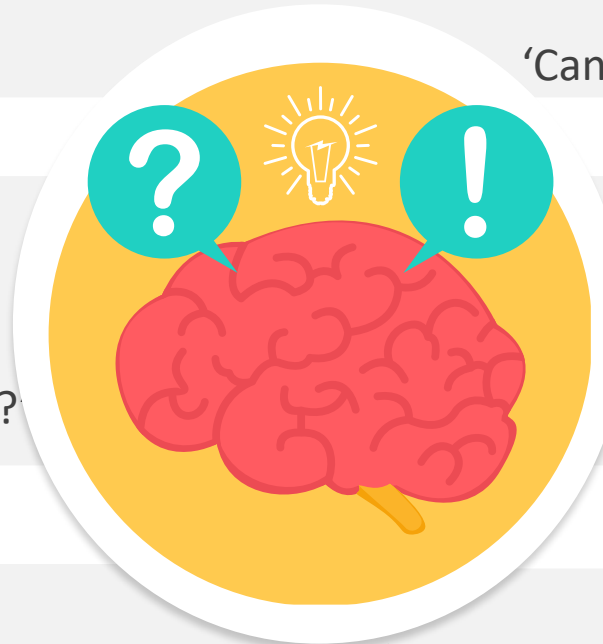
'Are there any special cases of...?'

**GENERALISE / MERUMUS**

'Is this always true, sometimes true or never true?';

'What happens in general?';

'What can change and yet... is still true?'



# SOALAN BERASASKAN INKUIRI

BERIKAN CABARAN DAN GALAKKAN  
SERTA, ARAHKAN PENUNTUT  
BERFIKIR SECARA MENDIRI.



## **MEMBANDINGKAN**

‘Apakah persamaan di antara ... dan ...?’;  
‘Dari segi mana dua perkara ini berbeza?’;  
‘Sila atur mengikut ...?’;  
‘Sila susun mengikut kategori/bahagian...?’

## **MENERANGKAN**

‘Kenapa awak berfikir seperti itu?’;  
‘Nyatakan alasan kepada saya sebab...’;  
‘Nyatakan apa/dimana silapnya perkara ini.’

## **MERAMAL**

‘Apa yang bakal berlaku seterusnya?’;  
‘Apakah yang kamu jangkakan berlaku, jika..’;  
‘Teka apa yg dapat kamu ramal dari...?’

## **MEMBERI CONTOH**

‘Nyatakan kepada saya contoh-contoh...’;  
‘Nyatakan kepada saya contoh-balas bagi..?’;  
‘Di manakah lagi kes-kes khas yang lain,  
berlaku/terjadi?’

## **MERUMUS**

‘Terangkan dengan ringkas, bagaimana...?’;  
‘Apakah yang berlaku / terjadi secara keseluruhan?’;  
‘Apakah formula bagi...?’;  
‘Bagaimanakah kamu mentakrifkan mengenai...?’  
Apakah intisari bagi ....?’

## Activity

Create questions based on the photo of Masjid Omar Ali Saifuddien that challenge students to think and encourage them to explain, exemplify, compare, conjecture and generalise.



## Activity by Using any AI apps

Genuine enquiry questions  
ALWAYS CHALLENGE  
STUDENTS TO THINK...

Prompt template:

Act as an experienced primary school Science teacher. Discuss and create questions based on [Type Your Topic: the photo of Masjid Omar Ali Saifuddien in Brunei] that challenge students to think and encourage them to explain, exemplify, compare, conjecture and generalise.





Diffit for Teachers

<https://beta.diffit.me>



# Diffit for Teachers

Instant learning resources for all.



# AVOID questions that discourage students to think...

01

Avoid asking closed testing questions.

02

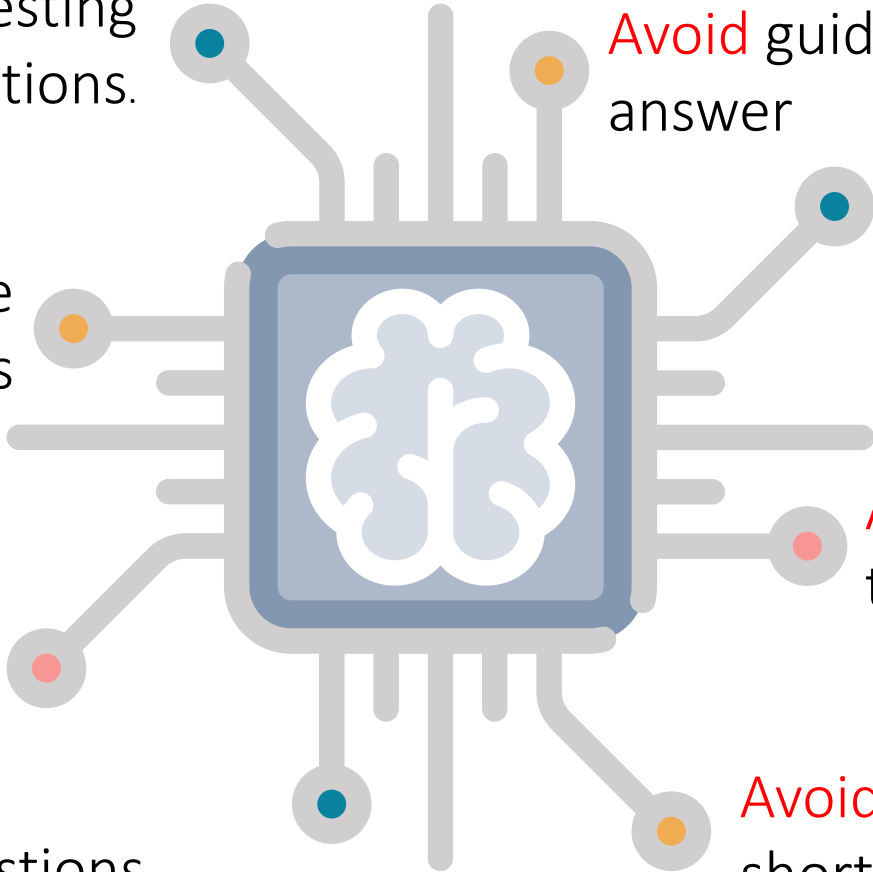
Avoid asking ineffective questions

03

Avoid asking rhetorical and guess-what's-in my-mind questions.

04

Avoid asking Leading questions



Avoid guiding students to the answer

05

Avoid telling students significant pieces of information

06

Avoid giving major clues to the answer

07

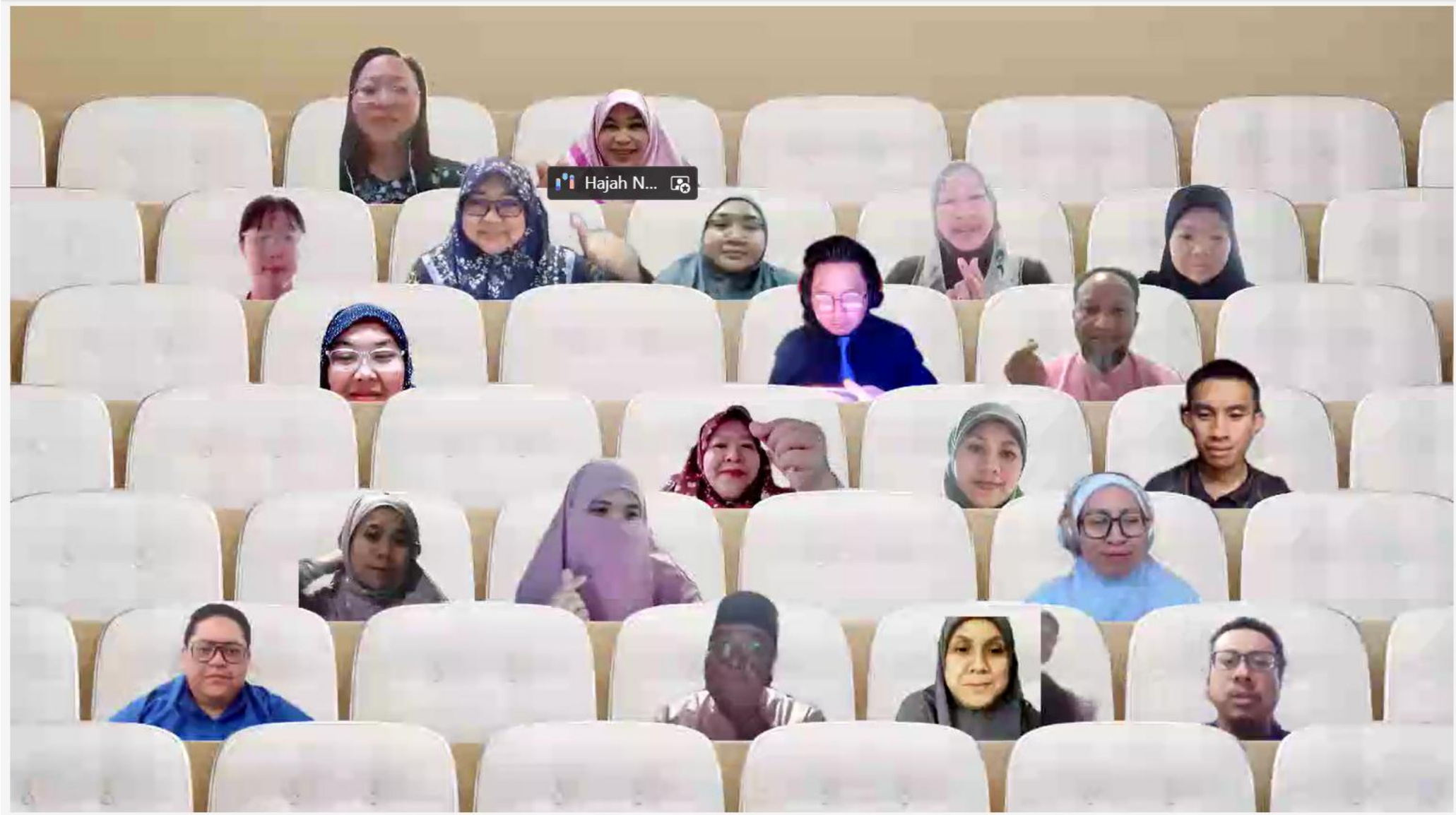
Avoid asking questions with short utterances' answers

08

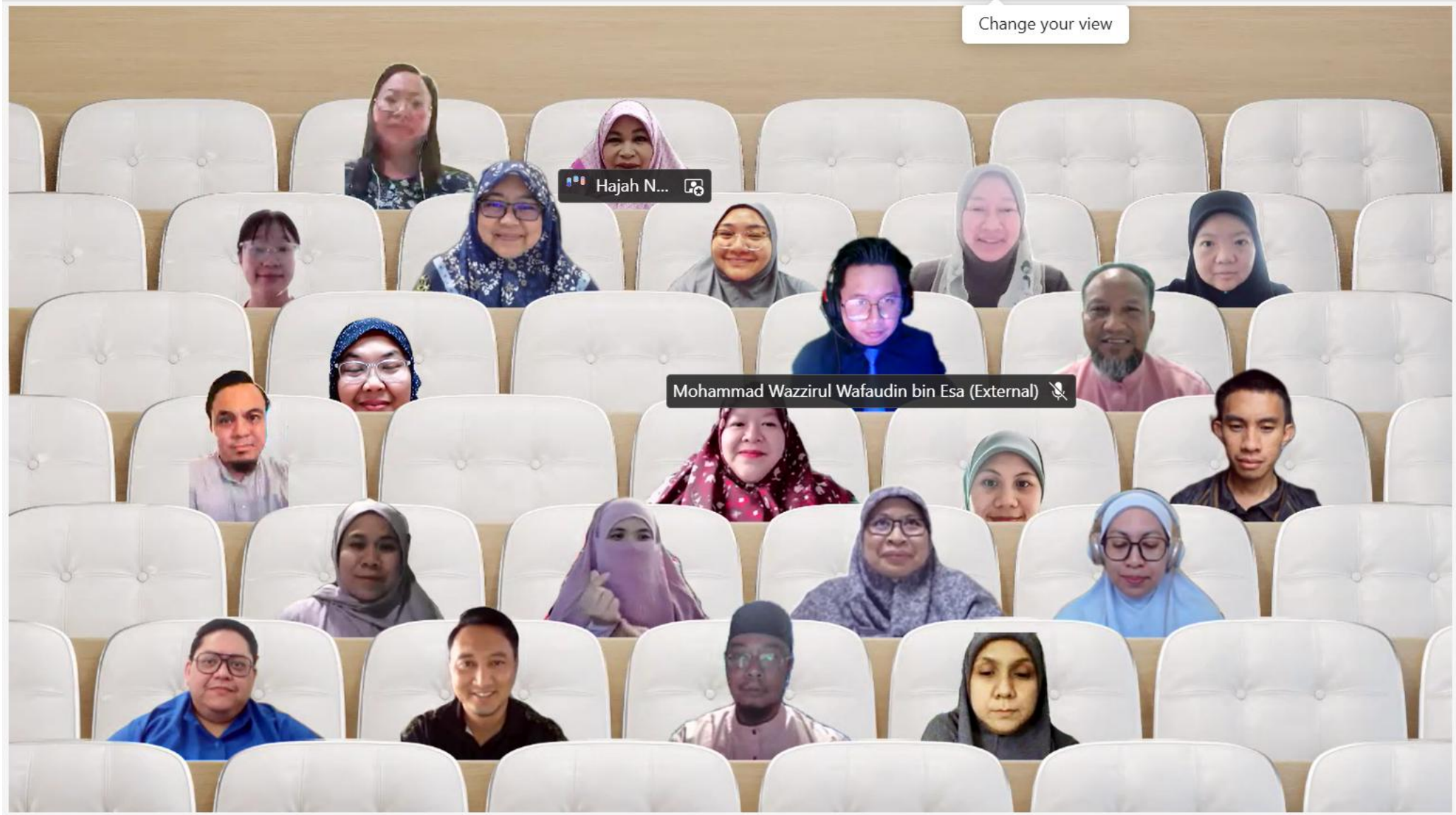


02:12:34

Exit spotlight | Chat | **366** People | Raise | React | View | Rooms | Apps | More | Camera | Mic | Share | **Leave**



<b>WA</b> wafi ahmad	<b>KP</b> Kartika Pua...
<b>CK</b> Cg Fong B...	<b>NH</b> Norita Md ...
<b>HK</b> Hamiedah ...	<b>NA</b> Nurin A (U...
<b>SM</b> Sa'adiyah bi...	<b>SS</b> Siti Salihah ...
<b>DZ</b> Dk Siti Baiz...	... View all



Participant list sidebar:

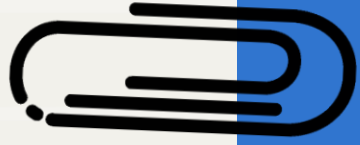
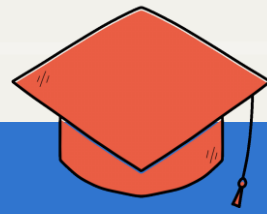
- WA** wafi ahmad [Microphone icon]
- KP** Kartika Pua... [Microphone icon]
- CK** Cg Fong B... [Microphone icon]
- NH** Norita Md ... [Microphone icon]
- HK** Hamiedah ... [Microphone icon]
- NA** Nurin A (U... [Microphone icon]
- SM** Sa'adiyah bi... [Microphone icon]
- SS** Siti Salihah ... [Microphone icon]
- DZ** Dk Siti Baiz... [Microphone icon]
- [More icon] View all

### Mixed Question Set (Health Education - Year 2)

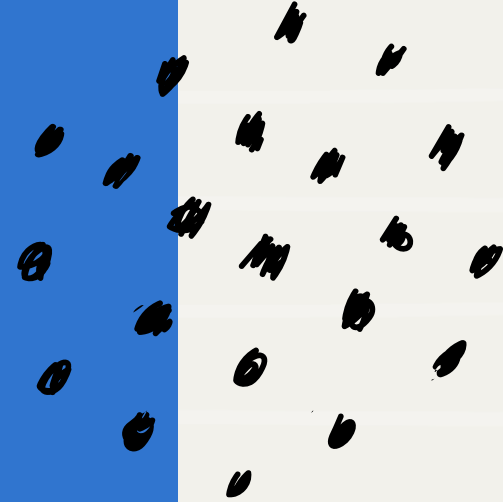
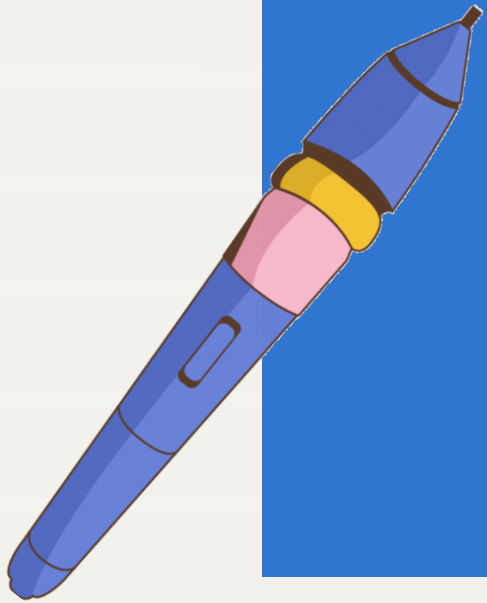
1. What are the names of the five senses? **TESTING**
2. Why do we need to drink water every day? **FOCUSING**
3. How can you tell if a food is healthy or unhealthy? **FOCUSING**
4. What happens to our body when we don't get enough sleep? **FOCUSING**
5. Can you list three healthy habits for strong teeth? **TESTING**
6. How do you feel when you eat a lot of sweets? **GENUINE ENQUIRY**
7. What should we do before and after eating? **TESTING**
8. Imagine you forgot to wash your hands before eating. What might happen? **FOCUSING**
9. Why do doctors say exercise is important? **FOCUSING**
10. What is the difference between a fruit and a vegetable? **TESTING**
11. What do you think would happen if we never brushed our teeth? **GENUINE ENQUIRY**
12. What do we use soap for? **TESTING**
13. How would you explain the importance of breakfast to your younger sibling? **GENUINE ENQUIRY**
14. Can you show me how you would correctly wash your hands? **FOCUSING**
15. Why do we cover our mouth when we cough or sneeze? **FOCUSING**

### SOLUTIONS:

- **Testing Questions**  
(Recall-based, checking prior knowledge)  
**1, 5, 7, 10, 12**
- **Focusing Questions**  
(Guiding students toward key concepts)  
**2, 3, 4, 8, 9, 14, 15**
- **Genuine Enquiry Questions**  
(Encouraging deeper thinking, personal reflection and reasoning)  
**6, 11, 13**



# Toolbox Evaluation Form



or simply browse  
[https://bit.ly/bespoke2024\\_evaluation](https://bit.ly/bespoke2024_evaluation)

# Surah Al Asr